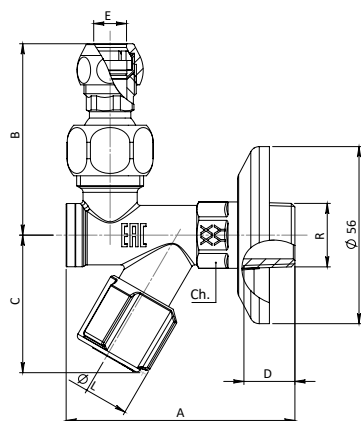
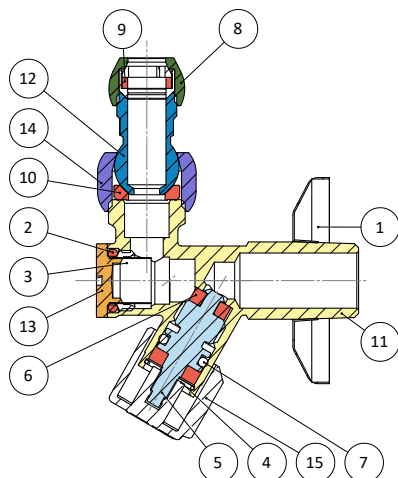



ART. 973	SPECIFICATIONS		APPLICATION	TECHNICAL NOTES
	Series	973	Assembly in rigid pipe system	Item designed, manufactured and tested in accordance to: EN 13828:2004 Manufacturing process managed in accordance to: EN ISO 9001
<i>Spindle valve with filter, rosette and swivel nut. Size 1/2"x10</i>	Thread ends	Male: UNI EN 10226	Nominal pressure (PN) in bar:10	All valves comply with directive 2014/68/UE and are 100% tested with electrically controlled pneumatic seal test. 2 YEARS warranty. Manufactured in brass alloy compliant with EN 12165-CW617N-DW.
	Orifice	8 mm	KV: flowrate coefficient m <sup>3</sup> /h	
	Actuator	Command screw	Direction of flow: one direction	
	Operator	ABS handle	Temperature range: -20 °C / +90°C	
			Use: Water	



N°	Descrizione	Description	Materials	Treatment	Q.ty
1	Rosone	Rosette	AISI 304	Chrome Plated	1
2	O-Ring	O-Ring	NBR70sh		1
3	Filtro 400 micron	400 micron filter	AISI 304		1
4	Anello elastico	Elastic ring	AISI 304		1
5	Vitone	Command screw	CW614N		1
6	Guarnizione	Seal	NBR70sh		1
7	O-Ring	O-Ring	NBR70sh	Chrome Plated	1
8	Dado	Nut	CW614N	Chrome Plated	1
9	Ogiva	Ogive	NBR70sh + CW614N		1
10	Guarnizione	Seal	NBR90sh		1
11	Corpo	Body	CW617N	Chrome Plated	1
12	Snodo	Junction	CW614N	Chrome Plated	1
13	Tappo	Cap	CW614N	Chrome Plated	1
14	Dado	Nut	CW617N	Chrome Plated	1
15	Maniglia	Handle	ABS	Chrome Plated	1

DN	R	A	B	C	D	E	L	Ch	PN
8	1/2"	72	58	42	16	10	27,6	19	10

N° Disegno / Drawing Nr	Misure / Size	 <b>BUGATTI</b> HIGH QUALITY VALVES	UFFICIO TECNICO
973	1/2"x10		