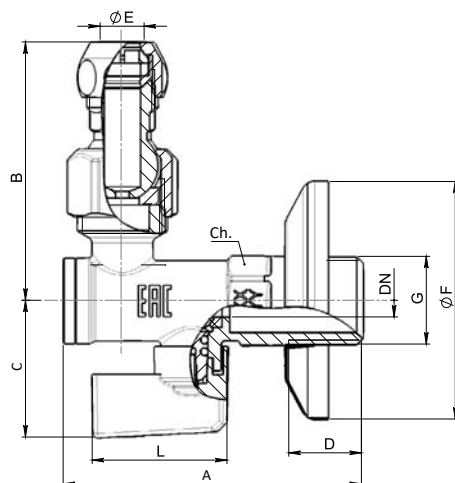
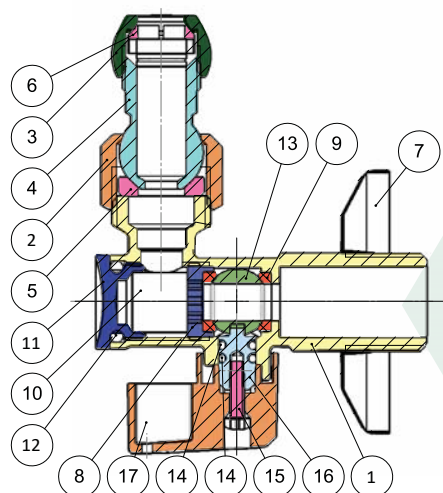



Codice Dianflex: 240-9401

ART. 775	SPECIFICATIONS		APPLICATION	TECHNICAL NOTES
	Series	775	Assembly in rigid pipe system	Item designed, manufactured and tested in accordance to: EN 13828:2004 Manufacturing process managed in accordance to: EN ISO 9001
Compact Chrome-plated angle ball valve with filter, rosette and swivel nut. Size 1/2"	Thread ends	Male: UNI ISO 228/1	Nominal pressure (PN) in bar:10	All valves comply with directive 2014/68/UE and are 100% tested with electrically controlled pneumatic seal test.
	Orifice	8 mm	KV: flowrate coefficient m ³ /h	
	Actuator	90° rotation with mechanical stop	Direction of flow: one direction	2 YEARS warranty.
	Operator	ABS handle	Temperature range: -20 °C / +90°C	
			Use: Water	Manufactured in brass alloy compliant with EN 12165-CW617N-DW.



N°	Descrizione	Description	Materials	Treatment	Q.ty
1	Corpo	Body	CW617N	Chrome Plated	1
2	Dado	Nut	CW614N	Chrome Plated	1
3	Dado	Nut	CW614N	Chrome Plated	1
4	Snodo	Junction	CW614N	Chrome Plated	1
5	Guarnizione	Seal	NBR90sh		1
6	Ogiva	Ogive	NBR70sh + CW614N		1
7	Rosone	Rosette	AISI 304	Chrome Plated	1
8	Ghiera	Brass ring	CW614N		1
9	Guarnizione sede sfera	Ball seal	PTFE		2
10	Filtro 400 micron	400 micron filter	AISI 304		1
11	Tappo	Cap	CW614N	Chrome Plated	1
12	O-Ring	O-Ring	NBR70sh		1
13	Sfera	Ball	CW614N	Ni+Cr	1
14	O-Ring	O-Ring	NBR70sh		1
15	Vite	Screw	Fe	Zinc-Plated	1
16	Perno	Stem	CW614N		1
17	Leva	Handle	ABS	Chrome Plated	1

DN	G	A	B	C	D	E	F	L	Ch	PN
8	1/2"	70	60	32	15	10	56	31,5	19	10

N° Disegno / Drawing Nr	Misure / Size		UFFICIO TECNICO
775	1/2" - 10		