

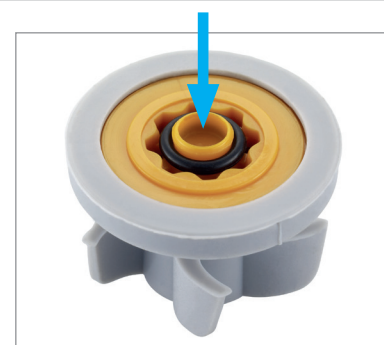
**Datasheet****Codice Dianflex: 241-0312****NEOPERL®**

flow, stop and go®

**PCW-02 1/2" Washer Regulators****Metric Flow Rates**

PCW-02 1/2" washer regulators are flow regulators with an added sealing function. Made for retrofit, they are kept in place in shower handles, bib taps or shattafs by means of a flexible turbine washer which replaces the usual washer. The flexible silicone washer fits bore diameters from 11-15 mm and ensures secure positioning in any threaded 1/2" connection.

The PCW-02 flow regulator must be inserted into the application with the turbine first and tightened with a torque of 2 Nm max. Observe the direction of flow.



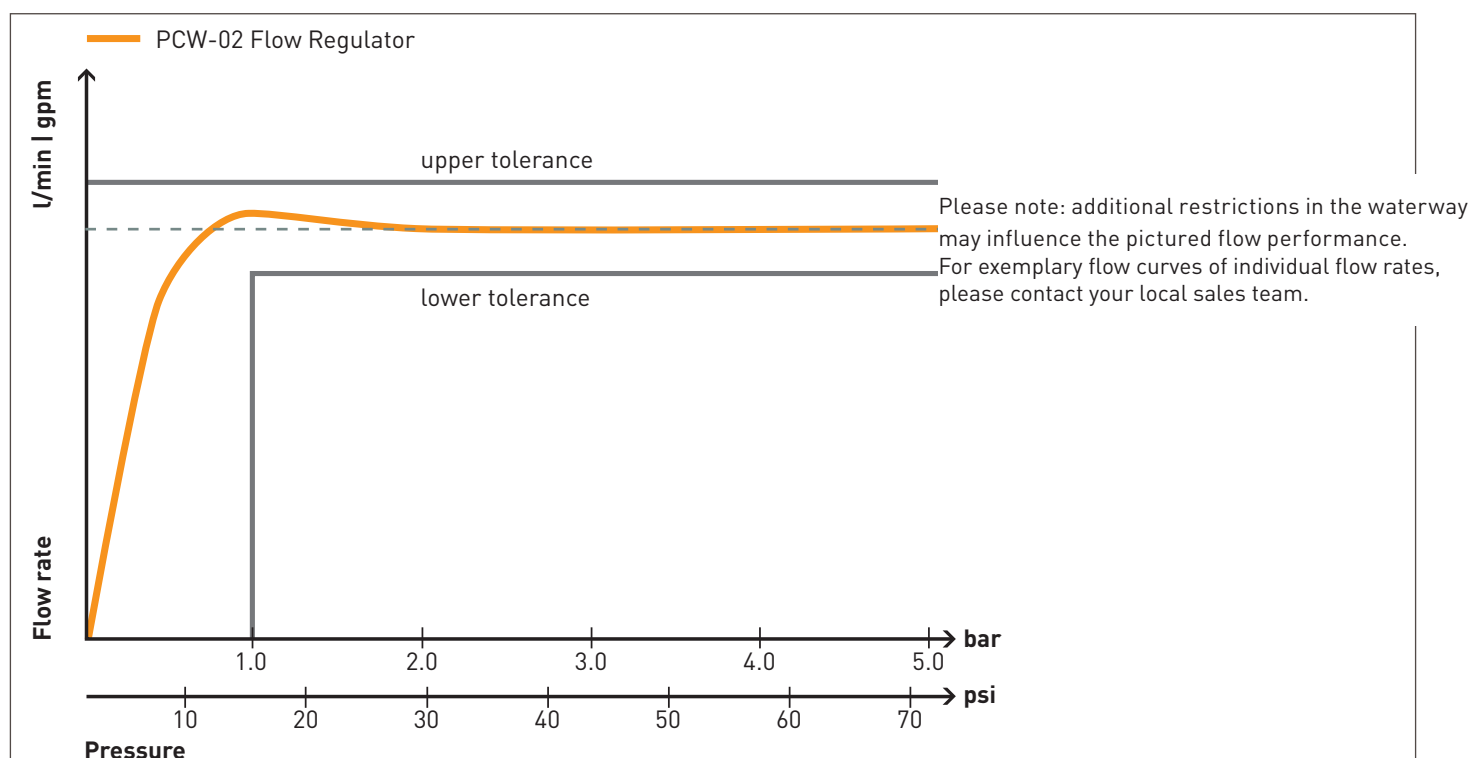
PCW-02 1/2" washer regulator

**Materials used**

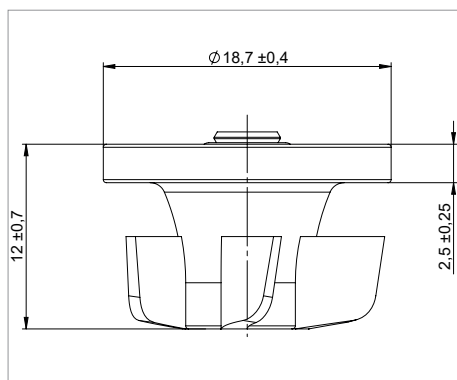
Housing: POM  
O-ring: EPDM  
PCW washer: silicone

**Model Overview****PCW-02 Washer Regulators**

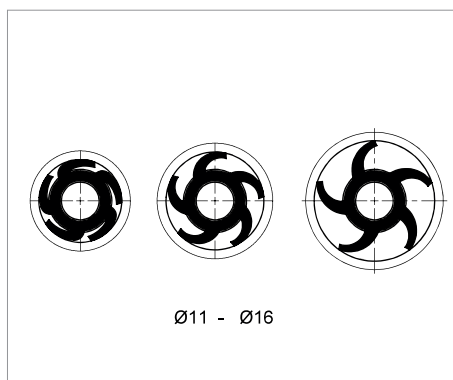
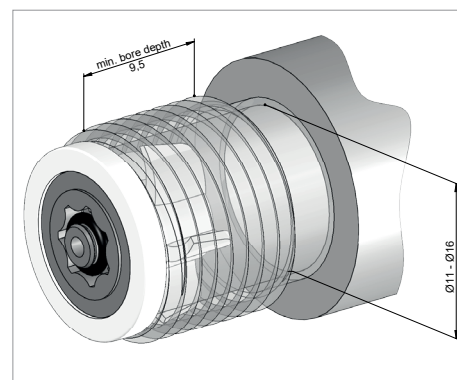
Model / Flow rate	Color Code	Part no. PCW-02	Flow tolerance (in %)	Pressure range (in bar)
PCW-02 1/2" 5.0 l/min.	yellow	58.9087.100	+20 / -20	1.0 - 10.0
PCW-02 1/2" 7.0 l/min.	light green	58.9089.100	+10 / -10	1.0 - 10.0
PCW-02 1/2" 10.0 l/min.	light blue	58.9092.100	+10 / -10	1.5 - 10.0

**Flow Curves**

### Dimensions (in mm)

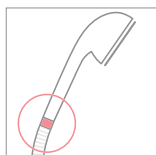
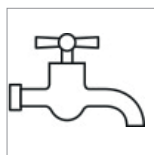
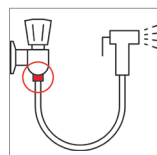


PCW-02 1/2" washer regulator

Suitable for bore diameters  
from 11- 16mm

Recommended Mounting Dimensions

### Intended Use

Drinking  
water onlyShower  
handlesBib taps/  
Wall spouts

Shattafs

### Assembly Instructions

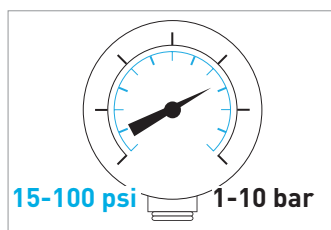
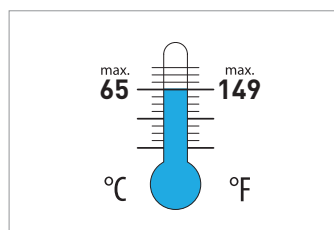
**ATTENTION!**

Product may not be altered!  
May not be used for hot water application exceeding 70°C

**ATTENTION!**

Max. mounting torque 2.0 Nm

### Operating Conditions



Indicated pressure values refer to supply line pressure.  
Avoid water hammer.